



RESOURCE AND PATIENT MANAGEMENT SYSTEM

Lab Accession GUI

(BLGU)

Installation Guide and Release Notes

Version 1.0
September 2012

Office of Information Technology (OIT)
Division of Information Resource Management
Albuquerque, New Mexico

Table of Contents

Preface	iv
1.0 Release Notes	1
1.1 Accessioning	1
1.2 Delete Accessioned Tests	1
1.3 Printing	1
1.4 Manifest	2
1.5 Order/Test Status	2
2.0 Installation Notes.....	3
2.1 General Information	3
2.2 Contents of Distribution	3
2.3 Required Resources.....	3
2.4 Before You Begin: Installation Issues	4
2.4.1 Standard Client Deployment.....	4
3.0 Installation Instructions	5
3.1 Routines and Checksums.....	5
3.2 Server Application Object Repository Installation	5
3.2.1 Installing the Client Components to the Shared Folder	6
3.3 KIDS Distribution	6
4.0 Sample Installations.....	8
4.1 Sample Cache Install.....	10
4.2 Sample Ensemble Install	10
Glossary.....	11
Acronym List	12
Contact Information	13

Table of Figures

Figure 1. WinZip Self-Extractor Dialog Box	6
Figure 2. WinZip Successful.....	6

Preface

This manual contains the installation information for the Laboratory Accession GUI package. Included are an introduction and release notes that should be shared with all Scheduling users. Also included are installation instructions and a sample installation session.

Security

The BLR does not use security keys to limit user's ability to change system set-up parameters and patient information.

Rules of Behavior

All RPMS users are required to observe HHS and IHS Rules of Behavior regarding patient privacy and the security of both patient information and IHS computers and networks.

1.0 Release Notes

The following is a list of changes made to the Laboratory Accession GUI (BLGU) for Version 1.0. This list does not provide detailed descriptions of all changes.

1.1 Accessioning

- **Accession tests ordered by ward:** The user can select one, or more laboratory orders for the specified patient to be accessioned.
- **Print Accession Labels:** Allows the user to automatically print accession labels to a designated printer.
- **Automatically refreshes patients list:** The system automatically refreshes the list of pending laboratory orders collected and uncollected.
- **Automatic Patient Removal:** The system will automatically remove the patient from the patient list when all ordered tests have been accessioned.
- **Laboratory Order Detail:** Detailed information for each order is displayed in the task pane.
- **Billing:** The system if configured is able to display to the user which party is responsible for billing.
 - **Third Party:** Display Third Party insurance companies
 - **Client:** Display all client account numbers for selection
 - **Patient:** Company name and policy name are used
- **Billing Diagnosis:** The user is able to select one or more ICD9 Diagnosis best represented for the order.

1.2 Delete Accessioned Tests

- **Delete an Accessioned Test:** Allows the user to delete accessioned tests grouped by the accession number.

1.3 Printing

- **Re-Print Labels:** Allows the user to re-print single or multiple accession labels using a date range once accessioning is complete.
- **Re-Print Manifest:** Allows the user to print a shipping manifest list for specimens sent outside the facility if a shipping manifest fails to print or a copy must be made.

- **Print Manifest:** Allows the user to print a shipping manifest list for lab specimens sent to outside laboratories.

1.4 Manifest

- **Build:** Allows the user to automatically build a manifest for all accessioned tests.
- **Start:** Allows the user to create an empty manifest that can remain open all day to be reviewed, closed, and shipped when the courier picks up specimens..
- **Add/Remove:** Allows the user to add or remove accessioned test that are designated for the manifest.
- **Close/Ship:** Allows the user to close the manifest at which time they can print the manifest or if they ship the manifest a date will be required.

1.5 Order/Test Status

- **Order/Test Status:** Allows the user to select a patient to see the status of all tests for a given day.

2.0 Installation Notes

- **Namespace:** BLGU
- **Current Version:** 1.0

Warning: Read entire notes file prior to attempting any installation.

2.1 General Information

- Make a copy of this distribution for offline storage.
- Print all notes/readme files.
- It is recommended that during the installation the terminal output is captured using an auxport printer attached to the terminal at which you are performing the software installation. This provides a printed audit trail if any problems should arise.

2.2 Contents of Distribution

File	Description
blgu010u.pdf	User Manual in PDF format
blgu010i.pdf	Installation Guide and Release notes in PDF format (this manual)
blgu010t.pdf	Technical manual in PDF format
blgu0100.zip	GUI software for the client PC
blgu0100.k	blgu kids build to register check sums and version numbers

2.3 Required Resources

RPMS Minimum Server Requirements

- Cache version 5.0
- Kernel version 8.0
- lr__0520.31k

Client PC Requirements

- Microsoft Windows XP or Windows 7
- Microsoft .NET Framework 3.5

2.4 Before You Begin: Installation Issues

Laboratory Accession GUI (BLGU) contains components that are installed on the RPMS Server and components that run on the client PC. Installation of the server components is conventional and consists of a KIDS build.

2.4.1 Standard Client Deployment

Standard client deployment refers to the conventional method of the installation of Windows software on a client PC using a setup application. New versions of the client software must also be installed on the PC when they are released. Use standard deployment if you are installing on a terminal server such as Citrix.

3.0 Installation Instructions

3.1 Routines and Checksums

The following table shows BLR routines and corresponding checksums.

Routine / Checksum
BLRAG01 / 101525594
BLRAG02 / 95576705
BLRAG03 / 810924020
BLRAG 04 / 47744545
BLRAG 05 / 60507235
BLRAG05A / 22332619
BLRAG05B / 49360365
BLRAG05C / 94268521
BLRAG05D / 55897276
BLRAG06 / 14304481
BLRAG07 / 24596113
BLRAG08 / 60481809
BLRAG09 / 113963521
BLRAG09A / 31280667
BLRAG09B / 82307196
BLRAG09C / 96098673
BLRAG09D / 132452560
BLRAG09E / 77176272
BLRAG09F / 68831349
BLRAG09G/2985363
BLRAG10/5772688
BLRAGC / 11387484
BLRAGUT / 23431877
BLRRLEVT/166606156

3.2 Server Application Object Repository Installation

The shared folder should be subdivided into separate directories for each namespace.

3.2.1 Installing the Client Components to the Shared Folder

1. Execute the self-extracting archive (blgu0100.exe) on the server where the RPMS-EHR shared folder resides.
2. When prompted for the installation folder, enter the full path to the shared folder where your bin and lib folders reside for the installation being updated.
3. Click the Unzip button to proceed with the extraction of compressed files.
4. When prompted, update any .ini file settings if necessary and click OK. The VueCentric .ini file is updated with the new settings.

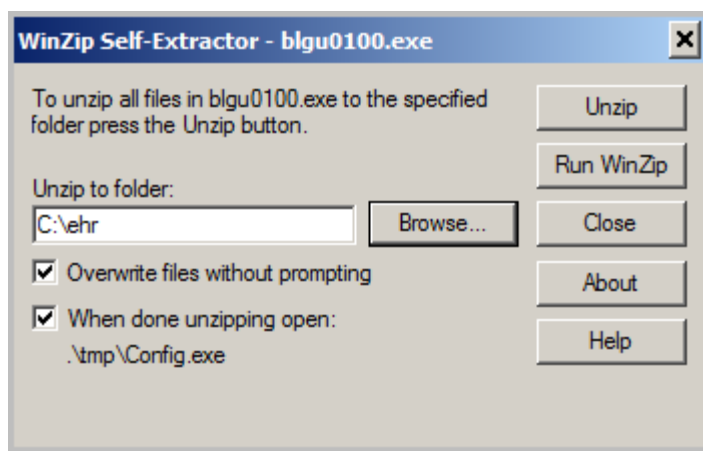


Figure 1. WinZip Self-Extractor Dialog Box

5. Click Unzip to extract the files necessary to begin the installation process. When the extraction process completes, a confirmation message appears:

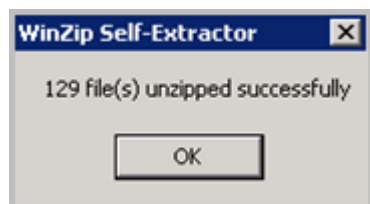


Figure 2. WinZip Successful

6. Click OK.

3.3 KIDS Distribution

1. Load distributions blgu0100.k and lr__0520.31k into KIDS using option 1 on the KIDS Installation menu.
2. Verify the checksums using option 2 on the KIDS Installation Menu.

3. Consider using the options 3 and 4 on the KIDS Installation Menu to print and compare the transport.
4. Install the distribution using option 6 on the KIDS Installation Menu.
5. You may be informed that one or more builds have already been installed and be prompted to continue loading. Respond YES in each case.
6. You may be informed that one or more broker processes are currently running. This is normal. Respond by entering a **Y** at the prompt to continue the installation.
7. When prompted to enable VueCentric logons, respond by entering **Y**.

4.0 Sample Installations

```

>D ^XUP

Setting up programmer environment
This is a TEST account.

Access Code:

Terminal Type set to: C-VT100

Select OPTION NAME:      EVE
1  EVE          Systems Manager Menu
2  EVENT DELAYED ORDERS MENU  OR DELAYED ORDERS      Event Delayed Orders
Menu
3  EVENT LOG  HLEM EVENT LOG      Event Log
4  EVENT MONITORING MENU  HLEV MENU MAIN      Event monitoring menu
5  EVENT MONITORING SERVER  HLEV-INFORMATION-SERVER      Event monitoring
server

Press <RETURN> to see more, '^' to exit this list, OR
CHOOSE 1-5: 1  EVE          Systems Manager Menu

Core Applications ...
Device Management ...
FM      VA FileMan ...
Manage Mailman ...
Menu Management ...
Programmer Options ...
Operations Management ...
Spool Management ...
Information Security Officer Menu ...
Task Manager ...
Taskman Management ...
User Management ...
Application Utilities ...
Capacity Management ...
HL7 Main Menu ...

You have PENDING ALERTS
      Enter "VA to jump to VIEW ALERTS option
Select Systems Manager Menu Option: PROgrammer Options
KIDS  Kernel Installation & Distribution System ...
PG    Programmer mode
      Delete Unreferenced Options
      Error Processing ...
      Global Block Count
      List Global
      Routine Tools ...

You have PENDING ALERTS
      Enter "VA to jump to VIEW ALERTS option
Select Programmer Options Option: K  Kernel Installation & Distribution
System

Edits and Distribution ...
Utilities ...
Installation ...

You have 9 PENDING ALERTS

```



```
Enter "VA to jump to VIEW ALERTS option

Select Kernel Installation & Distribution System Option: Installation

1  Load a Distribution
2  Verify Checksums in Transport Global
3  Print Transport Global
4  Compare Transport Global to Current System
5  Backup a Transport Global
6  Install Package(s)
   Restart Install of Package(s)
   Unload a Distribution

You have 9 PENDING ALERTS
Enter "VA to jump to VIEW ALERTS option

Select Installation Option: 1 Load a Distribution
Enter a Host File: C:/APP/ blgu0100.k

KIDS Distribution saved on Mar 15, 2012@02:40:28
Comment: IHS BLGU V1.0
This Distribution contains Transport Globals for the following Package(s):

    blgu*0100.k

Distribution OK!

Want to Continue with Load? YES// YES
Loading Distribution...

    blgu*0100.k

Use INSTALL NAME: blgu*0100 to install this Distribution.

1  Load a Distribution
2  Verify Checksums in Transport Global
3  Print Transport Global
4  Compare Transport Global to Current System
5  Backup a Transport Global
6  Install Package(s)
   Restart Install of Package(s)
   Unload a Distribution

You have PENDING ALERTS
Enter "VA to jump to VIEW ALERTS option

Select Installation Option: 6 Install Package(s)
Select INSTALL NAME: blgu*0100   Loaded from Distribution   Loaded from
Distribution 3/19/12@15:28:23
    => UPDATES   ;Created on Mar 15, 2012@02:40:28
This Distribution was loaded on Mar 19, 2012@15:28:23 with header of
    UPDATES   ;Created on Mar 15, 2012@02:40:28
It consisted of the following Install(s):
    LR*5.2*1031
Checking Install for Package blgu*0100

Install Questions for blgu*0100

Incoming Files:
```



```

69          LAB ORDER ENTRY  (Partial Definition)
Note:  You already have the 'LAB ORDER ENTRY' File.
Want KIDS to INHIBIT LOGONs during the install? NO// YES
Want to DISABLE Scheduled Options, Menu Options, and Protocols? NO//
Enter the Device you want to print the Install messages.
You can queue the install by enter a 'Q' at the device prompt.
Enter a '^' to abort the install.
BSDX 3.0
-----
Mar 19, 2012@15:28:39
  Running Post-Install Routine: POST^BLRAGC
Executing kill logic ...
Deleting index definition ...
Creating index definition ...
Executing set logic ...

  Updating Routine file...

  Updating KIDS files...

blgu*0100   Installed.
           Mar 19, 2012@15:28:39
Not a VA primary domain

NO Install Message sent

```

100% Complete

25

50

75

Install Completed

```

1   Load a Distribution
2   Verify Checksums in Transport Global
3   Print Transport Global
4   Compare Transport Global to Current System
5   Backup a Transport Global
6   Install Package(s)
   Restart Install of Package(s)
   Unload a Distribution

You have 9 PENDING ALERTS
   Enter "VA to jump to VIEW ALERTS option

There is PRIORITY Mail!

```

4.1 Sample Cache Install

None, Cache is already installed.

4.2 Sample Ensemble Install

None, Ensemble is already installed.

Glossary

Term	Definition
Namespace	A unique set of 2 to 4 alpha characters that are assigned by the database administrator to a software application.

Acronym List

Acronym	Description
BLGU	Lab Accession GUI
BLR	IHS Laboratory Namespace
IHS	Indian Health Service
RPMS	Resource and Patient Management System
HHS	Health and Human Services
ICD9	International Classification of Diseases Version 9

Contact Information

If you have any questions or comments regarding this distribution, please contact the OIT Help Desk (IHS).

Phone: (505) 248-4371 or (888) 830-7280 (toll free)

Fax: (505) 248-4363

Web: <http://www.ihs.gov/GeneralWeb/HelpCenter/Helpdesk/index.cfm>

Email: support@ihs.gov